



Light efficiency:

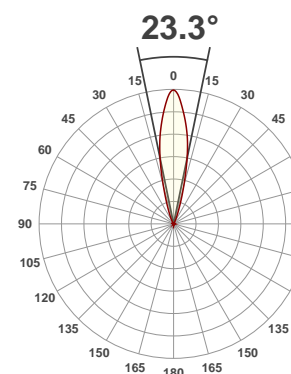
43 Lumen/Watt

Light quality:

CRI: 71.7

Color temperature:

6828 K



Product name:

12P Hex

Test:

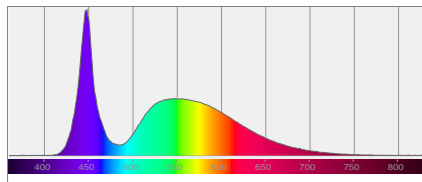
White

Date:

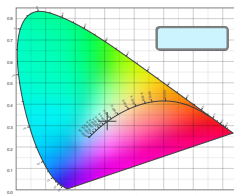
11/6/2017

Output: 1122 lm Power consumption: 26.3 W Peak: 5988 cd

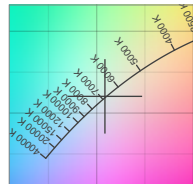
Spectral distribution



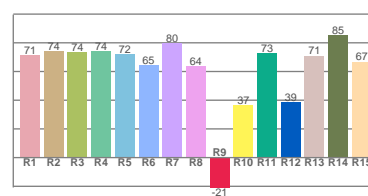
Color coordinates



Zoom color point

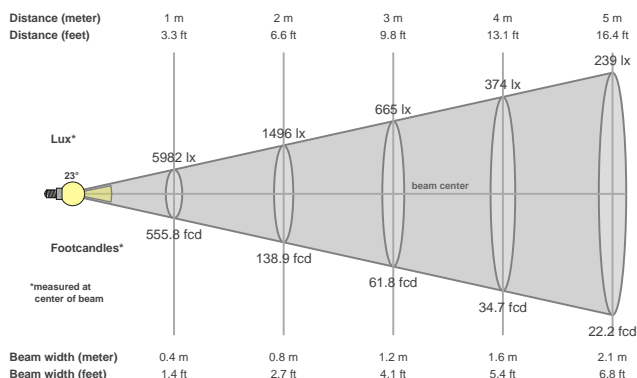


CRI R values



Color temperature	Color rendering index	Red component	Color fidelity	Color gamut	Color quality scale	Color coordinate cie 1931	Color coordinate cie 1931	Color coordinate	Color coordinate	Color diviation from black body
CCT	CRI	CRI R9	TM30 Rf	TM30 Rg	CQS	x	y	u	v	Δuv
6828 K	71.7	-20.8	67.7	95.5	69.4	0.309	0.320	0.198	0.309	0.0023

Beam details



Beam angels

Beam angle 50%	Field angle 10%	Cutoff angle 2,5%
23.3°	41.4°	55.3°

Beam intensities

Peak intensity	Int. ratio in 120° cone	Int. ratio in 90° cone
5988 cd	98.1%	97.4%

Power

Power	Power factor	Power frequency
26.3 W	0.94	60 Hz

Nominal voltage	Voltage	Current
230 V	117 V	0.239 A

Beam intensities from 1-20m

1m	2m	3m	4m	5m	6m	7m	8m	9m	10m	11m	12m	13m	14m	15m	16m	17m	18m	19m	20m
3.3ft	6.6ft	9.8ft	13.1ft	16.4ft	19.7ft	23ft	26.2ft	29.5ft	32.8ft	36.1ft	39.4ft	42.7ft	45.9ft	49.2ft	52.5ft	55.8ft	59.1ft	62.3ft	65.6ft
5982lx	1496lx	665lx	374lx	239lx	166lx	122lx	93lx	74lx	60lx	49lx	42lx	35lx	31lx	27lx	23lx	21lx	18lx	17lx	15lx
555.8fcd	138.9fcd	61.8fcd	34.7fcd	22.2fcd	15.4fcd	11.3fcd	8.7fcd	6.9fcd	5.6fcd	4.6fcd	3.9fcd	3.3fcd	2.8fcd	2.5fcd	2.2fcd	1.9fcd	1.7fcd	1.5fcd	1.4fcd